

Use of Health Information Systems

Some Canadian Examples

Uses of Health Information Systems

- Behaviours/Risk Factors
- Diseases/Outcomes
- Procedures
- Complications

Uses of Health Information Systems

- Geographic Distribution
 - Place of Care
 - Place of Residence
- Comparisons with Peers
- Comparisons through Time

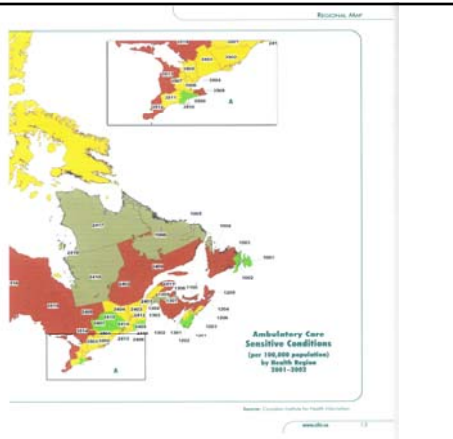
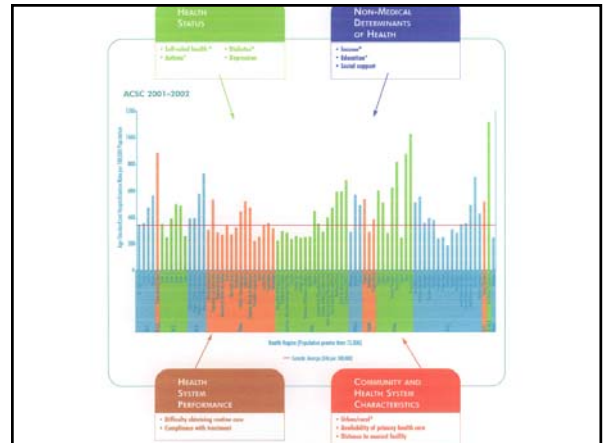
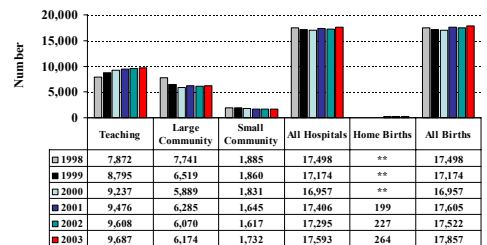


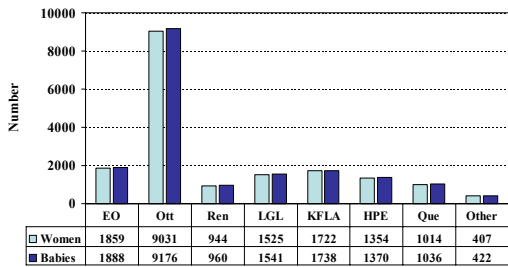
Figure 1 Number of women who gave birth in the region*, by place of birth, 1998-2003.



* Eastern and Southeastern Ontario
 ** not collected from 1998-2000

Source: Perinatal Partnership Program of Eastern and Southeastern Ontario, Niday Perinatal Database.

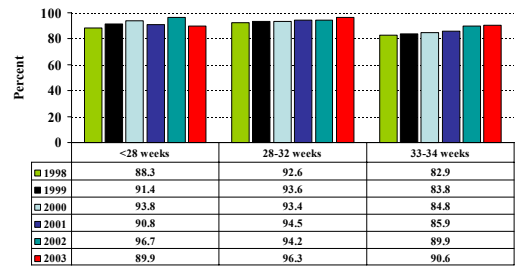
Figure 2 Number of women who gave birth and number of babies born in the region*, by health unit region, 2003.



* hospital births and home births in Eastern and Southeastern Ontario

Source: Perinatal Partnership Program of Eastern and Southeastern Ontario, Niday Perinatal Database.

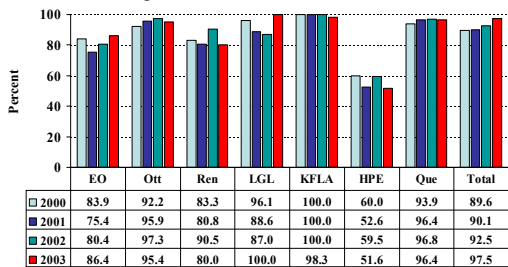
Figure 14 Proportion of livebirths who were born in a teaching hospital in the region*, by gestational age, 1998-2003.



* Eastern and Southeastern Ontario, home births included as of 2002

Source: Perinatal Partnership Program of Eastern and Southeastern Ontario, Niday Perinatal Database.

Figure 15 Proportion of preterm babies ≤ 34 weeks who were born in a teaching hospital in the region*, by health unit region, 2000-2003.

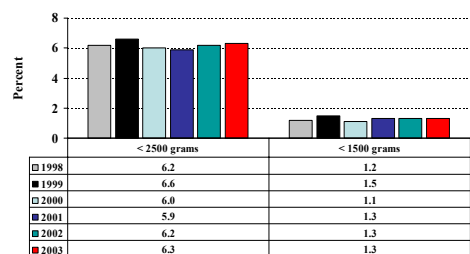


* Eastern and Southeastern Ontario, home births included as of 2002

Source: Perinatal Partnership Program of Eastern and Southeastern Ontario, Niday Perinatal Database.

Disease/Outcomes

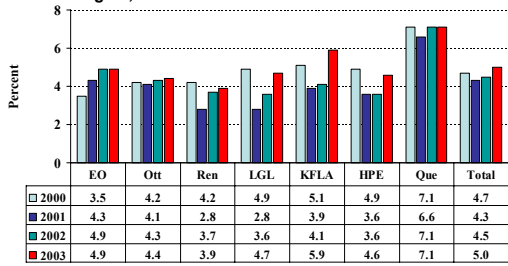
Figure 6 Proportion of babies who were born with low birthweight (< 2500 grams) and very low birthweight (less than 1500 grams) in the region*, 1998-2003.



* Eastern and Southeastern Ontario, home births included as of 2002

Source: Perinatal Partnership Program of Eastern and Southeastern Ontario, Niday Perinatal Database.

Figure 8 Proportion of singleton babies who were born with low birthweight (<2,500 grams) in the region*, by health unit region, 2000-2003.

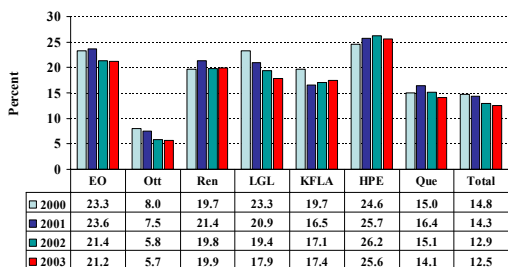


* Eastern and Southeastern Ontario, home births included as of 2002

Source: Perinatal Partnership Program of Eastern and Southeastern Ontario, Niday Perinatal Database.

Behaviours/Risk Factors

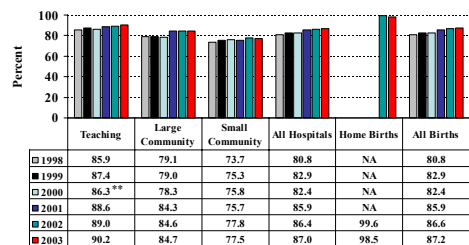
Figure 18 Proportion of women who smoked after twenty weeks of pregnancy, by health unit region*, 2000-2003.



* Eastern and Southeastern Ontario, home births included as of 2002

Source: Perinatal Partnership Program of Eastern and Southeastern Ontario, Niday Perinatal Database.

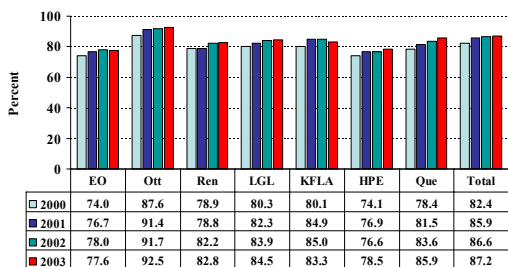
Figure 27 Proportion of women who intend to breastfeed, by place of birth*, 1998-2003.



* Eastern and Southeastern Ontario
** excludes Ottawa Hospital - General Campus

Source: Perinatal Partnership Program of Eastern and Southeastern Ontario, Niday Perinatal Database.

Figure 28 Proportion of women who gave birth who intended to breastfeed, by health unit region*, 2000-2003.

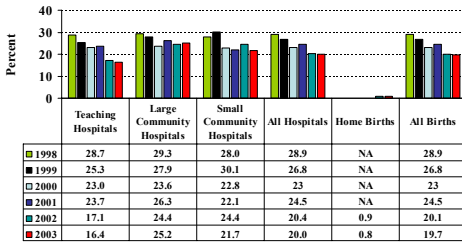


* Eastern and Southeastern Ontario, home births included as of 2002

Source: Perinatal Partnership Program of Eastern and Southeastern Ontario, Niday Perinatal Database.

Procedures

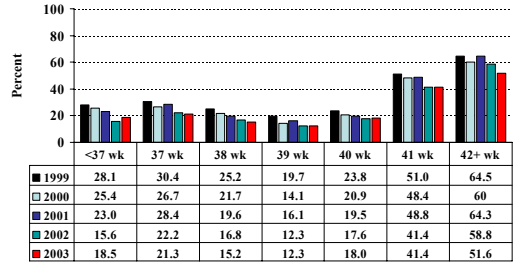
Figure 19 Proportion of women who had labour induced, by place of birth*, 1998-2003.



* Eastern and Southeastern Ontario

Source: Perinatal Partnership Program of Eastern and Southeastern Ontario, Niday Perinatal Database.

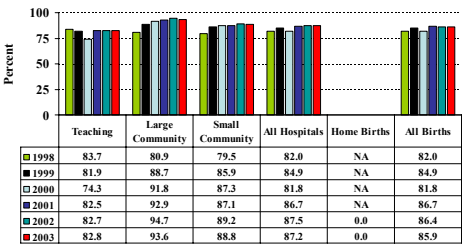
Figure 20 Proportion of women with a singleton vertex baby who had labour induced in the region*, by gestation, 1999-2003.



* Eastern and Southeastern Ontario, home births included as of 2002

Source: Perinatal Partnership Program of Eastern and Southeastern Ontario, Niday Perinatal Database.

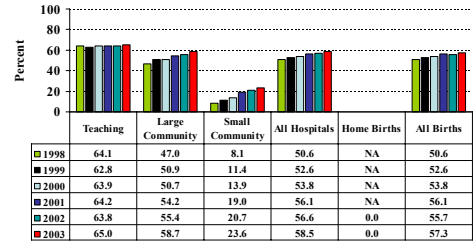
Figure 21 Proportion of women who have electronic fetal monitoring during labour, by place of birth*, 1998-2003.



* Eastern and Southeastern Ontario

Source: Perinatal Partnership Program of Eastern and Southeastern Ontario, Niday Perinatal Database.

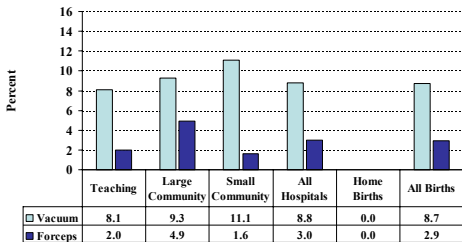
Figure 22 Among women who have a vaginal birth, proportion who have epidural anaesthesia, by place of birth*, 1998-2003.



* Eastern and Southeastern Ontario

Source: Perinatal Partnership Program of Eastern and Southeastern Ontario, Niday Perinatal Database.

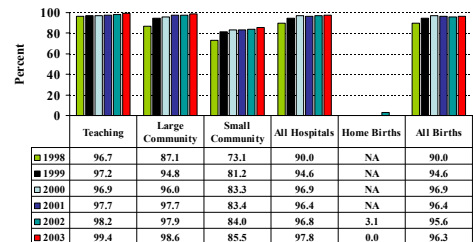
Figure 23 Among babies with a vertex presentation, proportion with forceps- or vacuum-assisted birth in the region*, by place of birth, 2003.



* Eastern and Southeastern Ontario

Source: Perinatal Partnership Program of Eastern and Southeastern Ontario, Niday Perinatal Database.

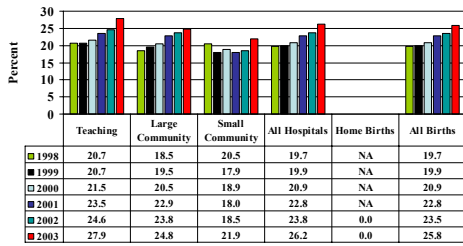
Figure 25 Proportion of babies who have blood taken for cord blood gases at the time of birth, by place of birth*, 1998-2003.



* Eastern and Southeastern Ontario

Source: Perinatal Partnership Program of Eastern and Southeastern Ontario, Niday Perinatal Database.

Figure 26 Proportion of babies who had a caesarean birth in the region, by place of birth*, 1998-2003.



* Eastern and Southeastern Ontario

Source: Perinatal Partnership Program of Eastern and Southeastern Ontario, Niday Perinatal Database.