

Health Information System

CPOG
Yerevan, Armenia

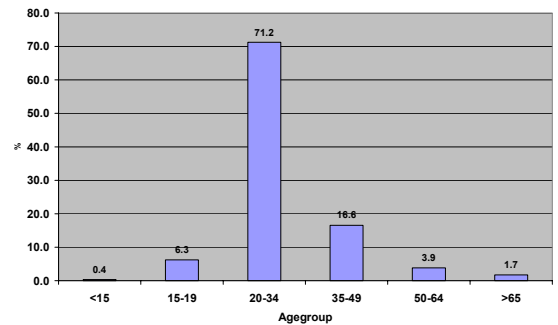
Uses of Health Information System

- Health Planning
- Facility Management
- Patient Care

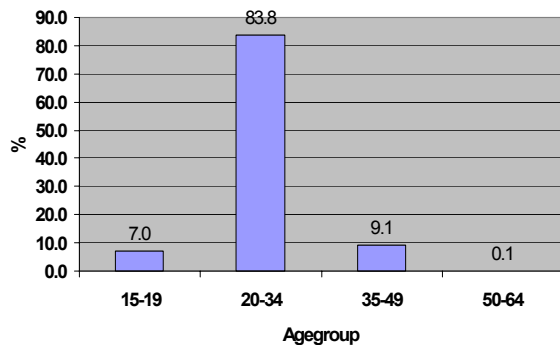
Health Planning

- Characterize Patients
 - Age
 - Gender
 - Place of residence
- Disease type and severity
- Referral Patterns

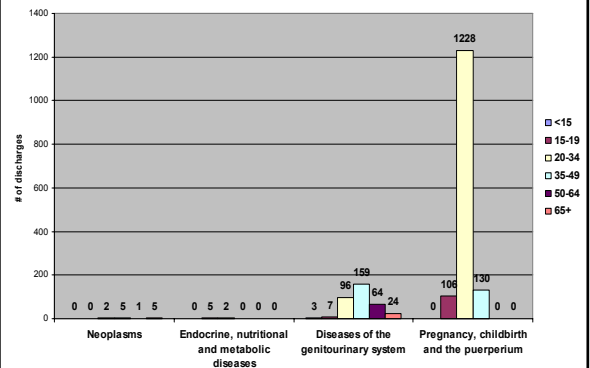
Percentage of Patients CPOG 2004

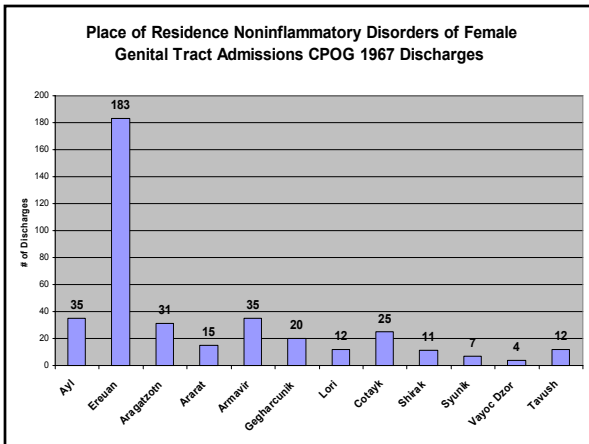
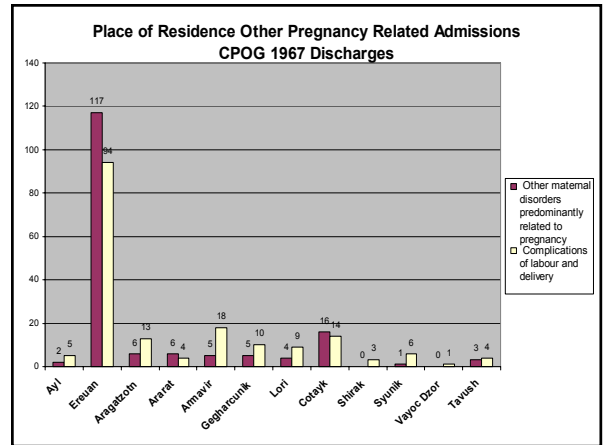
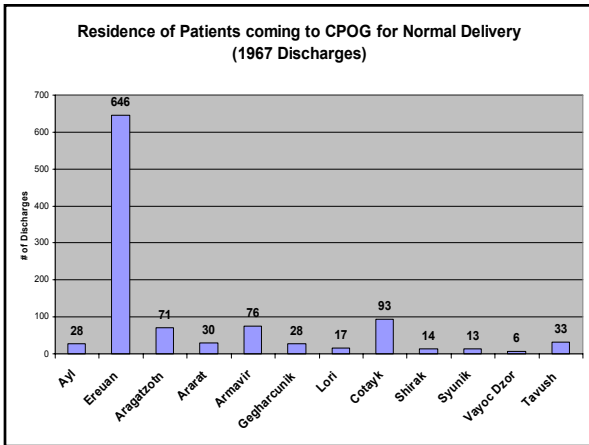
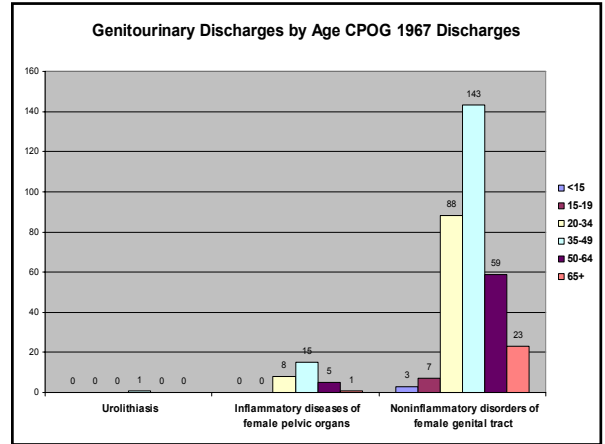
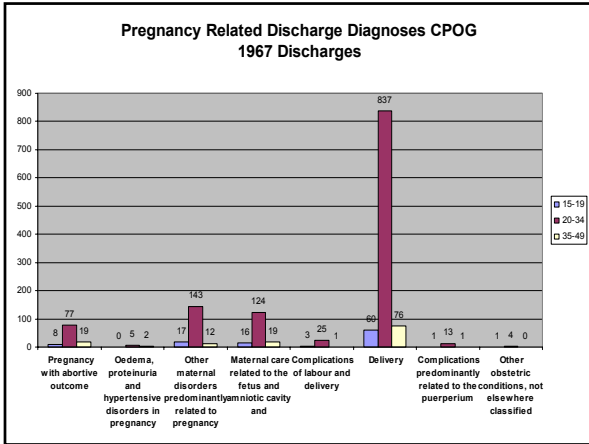


Percent Patients Labour and Delivery



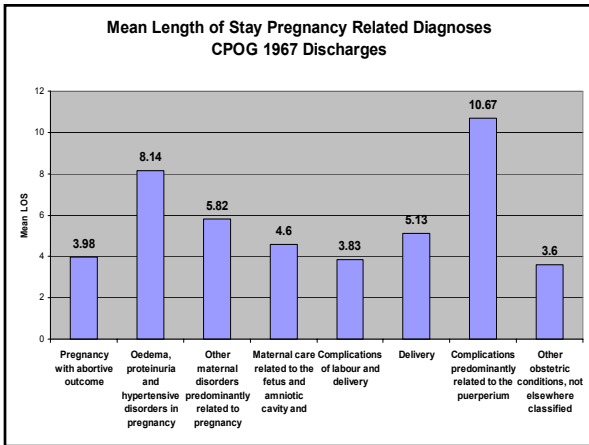
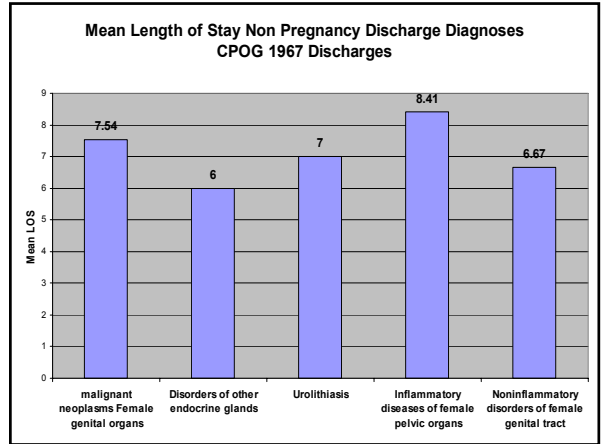
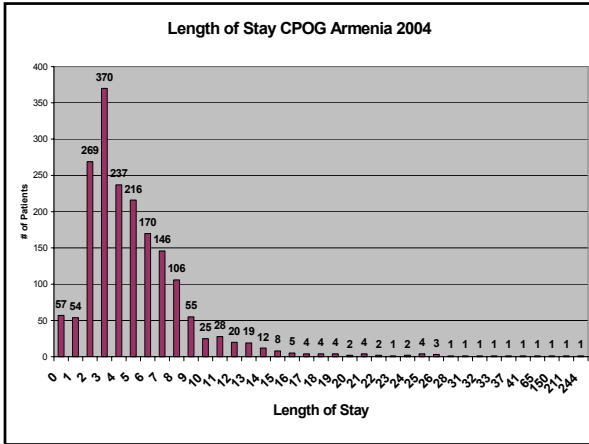
Discharge Diagnosis by Chapter CPOG 1967 Discharges





Facility Management

- Length of Stay
- Transfers
- Occupancy Rates
- Use of Procedures



0063 CPOG Length of Stay by Diagnosis 2005-01-21 from [2004-06-01] to [2004-11-30]

ICD-10 Final Diagnosis	Discharges	Min.	Avg.	Max.	Occup.
C53 Malignant neoplasm of cervix uteri	5	1	6.2	10	0.1%
C54.0 Malignant neoplasm of isthmus uteri	2	1	4.0	7	0.0%
C54.1 Malignant neoplasm of endometrium	5	6	8.8	11	0.1%
C56 Malignant neoplasm of ovary	1	15	15.0	15	0.0%
E28.2 Polycystic ovarian syndrome	7	4	6.0	8	0.1%
N21.1 Calculus in urethra	1	7	7.0	7	0.0%
N71 Inflammatory disease of uterus, except cervix	1	14	14.0	14	0.0%
N71.0 Acute inflammatory disease of uterus	1	5	5.0	5	0.0%
N71.9 Inflammatory disease of uterus, unspecified	1	6	6.0	6	0.0%
N73.3 Female acute pelvic peritonitis	22	1	8.7	21	0.5%
N75.1 Abscess of Bartholin's gland	2	3	4.5	6	0.0%
N76 Other inflammation of vagina and vulva	1	14	14.0	14	0.0%

0063 CPOG Open Cases [90] Days or Older for [0063 CPOG] 2005-01-21

Admit date	Days	Case number	Admitting provider
2004-05-01	265	21-307	00631016 Duke, Tessa
2004-06-01	234	21-392	00631019 Elliot, Carol
2004-06-02	233	21-395	00631016 Duke, Tessa
11-1120			00631016 Duke, Tessa
2004-06-07	228	11-1149	00631017 Cottage, Bethany
11-1145			00631017 Cottage, Bethany
21-404			00631017 Cottage, Bethany
2004-06-08	227	11-1161	00631018 Sommers, Sarah
21-407			00631018 Sommers, Sarah
2004-06-09	226	21-411	00631019 Elliot, Carol
21-410			00631019 Elliot, Carol
2004-06-10	225	21-412	00631019 Elliot, Carol
21-412			00631019 Elliot, Carol
2004-06-14	221	21-417	00631016 Duke, Tessa
2004-06-15	220	11-1223	00631017 Cottage, Bethany
21-423			00631017 Cottage, Bethany

